

esi



Evolve4-FM

Quad fixed + motion monitor arm

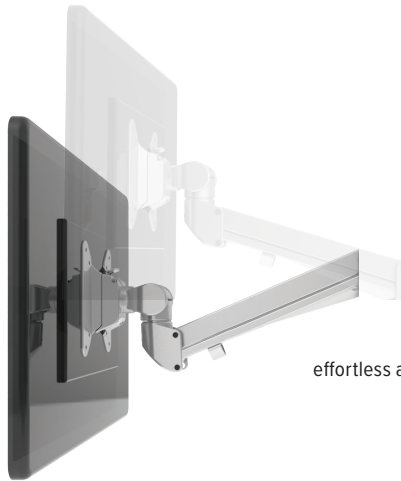


Evolve4-FM

Quad fixed + motion monitor arm



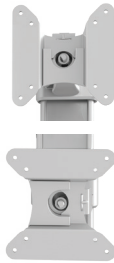
esi



effortless adjustment



cable management



landscape/portrait rotation



grommet mount



desk clamp



integrated allen key storage



VESA quick release

Product specs

- Finger touch dynamic height adjustment
- Recommended for worksurfaces 36.0" deep or less
- 29.2" arm extension
- 4.1" arm retraction
- +90°/-25° monitor tilt
- ±90° VESA rotation
- 6.5 lb.–17.6 lb. weight capacity (*per arm*)
- 30.0" pole height (*includes base*)
- VESA 75mm/100mm quick release
- 180° lock-out feature
- Desk clamp and grommet mount included
- 32.0" max. monitor width
Bezel measured left to right.
Max. width is contingent on weight capacity.
Note: monitor height/weight might limit size.
- Meets or exceeds BIFMA x5.5 and CSA CAN/CGSB44.227 guidelines
- Warranty: 15 yr.



Model

- EVOLVE4-FM-SLV
- EVOLVE4-FM-BLK
- EVOLVE4-FM-WHT

Evolve monitor arm key

- F - Fixed monitor arm
- M - Motion monitor arm
- S - Slider mount

Evolve for every need

- As workstation needs change, so can the Evolve configurations. Additional components sold separately
- Benching system mount(s) available

Call our Customer Service Department for compatibility and pricing for custom configurations.

Evolve4-FM

Quad fixed + motion monitor arm

esi

